



Maison Payroll Application Brochure



MAISON AX PAYROLL

Maison Ax Payroll is tailored primarily to meet the unique business needs of vertical organizations. The module provides an easy-to-use interface of Microsoft Dynamics AX and uses the same installation technique and security features as that of Microsoft Dynamics AX. It is an interactive solution that offers users tremendous flexibility and ease.

It reduces administrative costs, save time, and manages employee information effectively. Payroll for Microsoft dynamics Ax can help manage all your payroll functions in one integrated system, streamline your processes, provide insight into personnel costs, and improve payroll accuracy.

With customized benefits and deductions and support for multiple jobs and pay bases, Payroll can help you reduce complexity, avoid errors, and simplify your record keeping, Flexible user-defined rules make it easy to adapt your processes to an ever-changing work force.

Key Features

Integration with other modules

Maison AX Payroll is tightly integrated with Microsoft Dynamics AX Human Resource, General Ledger and Bank module.

✓ General Ledger:

Saves time and errors by automatically posting employee payments and benefits into general ledger module. It provides the employee sub-ledger into the GL module.

✓ Bank:

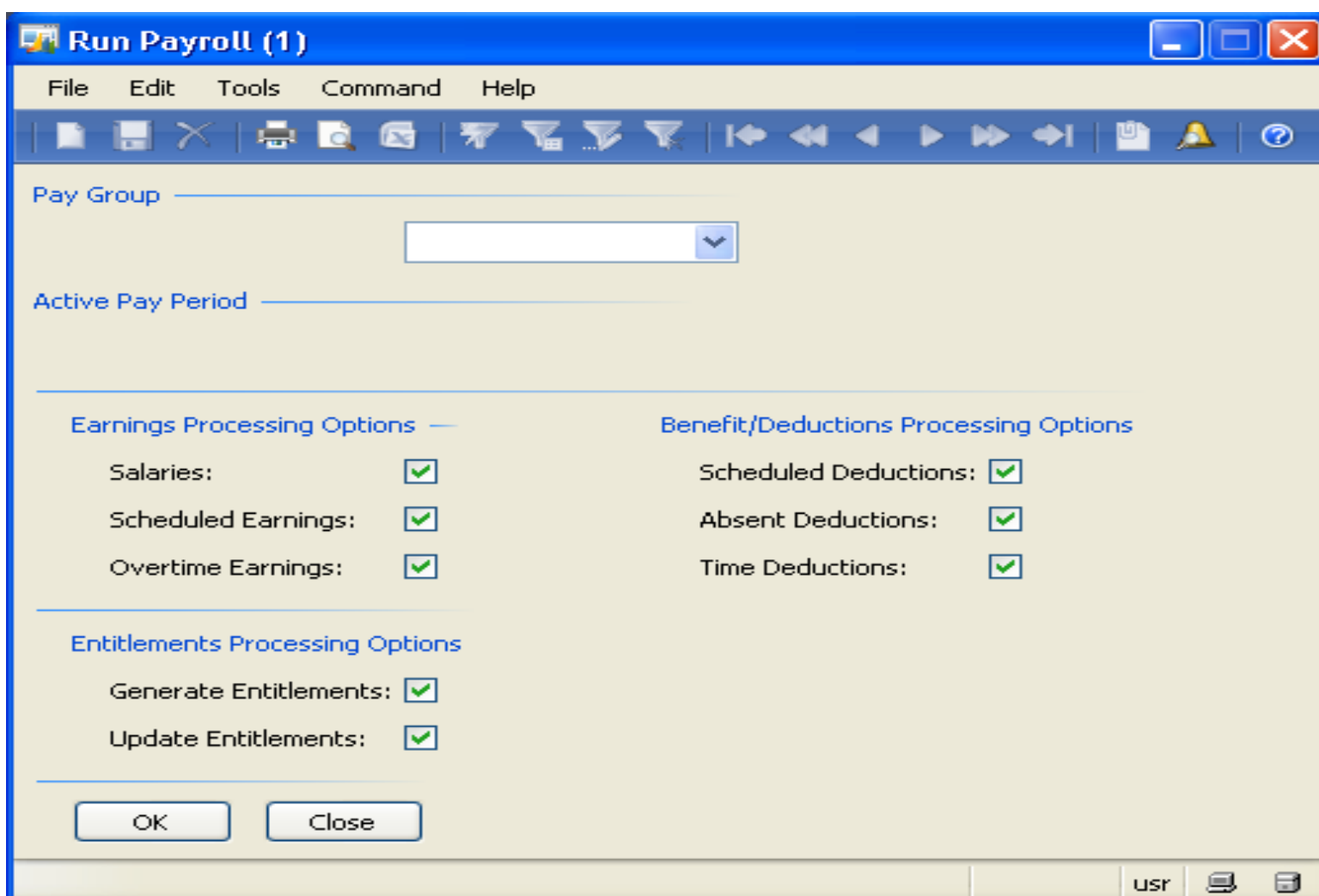
Provides the integration with bank the modules including check printing and cancellation within the module. Provides the functionality to export files to electronic banking system.

User Defined Calculations:

Offers user-defined calculations for allowances, bonuses, deductions, benefits and entitlements for each employee.

Permits users to define formulae and/or use previously defined formulae to define new formulae

Your Payroll is just one click away



User Defined Pay Periods:

Offers user-defined pay periods for monthly, bi-monthly, weekly or daily salary calculation.

User Defined Pay Groups:

Payroll department can simplify and reduce their workload by grouping together the employees whose pay data is largely the same.

Allows user to categorize the employees into user defined pay groups to process and post payroll separately.

Custom Rules:

Allows user to formulate multiple custom rules according to the company policies for earnings, deductions. Benefits and entitlements. Different employees can have different salary calculations according to their rules.

User-Defined Earnings and Deductions

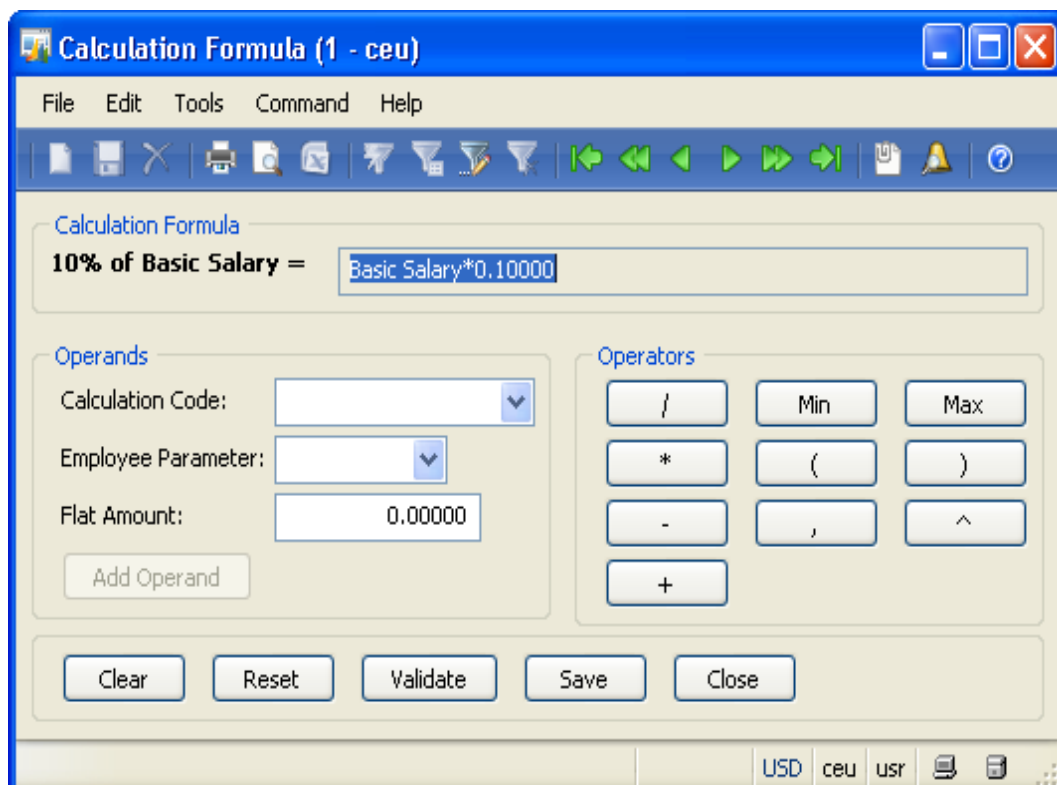
Facilitates customization of earnings and deductions that can be assigned to employees as per their contract and can automatically be included in the monthly employee pay slip and pay register.

Rule Based Earnings & Deductions

Allows users to formulate their own rules that comply with the organizational policies for earnings and deductions Social/Family Insurances

Multi Currency and Multi Language:

Provides the functionality to pay employee salaries into multiple currencies at the same time through the same bank. It also supports Arabic language in addition to the AX installed languages.



Leaves Management:

Facilitates users to define rules based leave entitlement setup. According to the defined rules, these leaves can be taken as vacations or can be converted into earnings through system.

- Leave Management
- Rules based leave entitlement setup
- Email request for leave approval
- Employee wise yearly leave record
- Prorated leave balances
- Entitlement Payouts

Loan Management:

Provides a complete comprehensive management system through Work Flow Functionality. It also provides approval, recovery and schedule management.

Flexible Import functionality

Provides the functionality to import overtime absents and time deductions data through MS Excel file.

Over Time Factor/Rate:

Allows users to define multiple overtime rates according to the custom rules.

Pre-Defined Reports and Inquiries

Provides a wide range of pre-defined reports and inquiries covering several standard user requirements for payroll activities, accounting and administration. All reports can easily be transferred to variety of destination medias such as Adobe Acrobat and Ms. Excel.

List of reports that ship with Maison Ax Payroll:

- Employee Pay Slip
- Pay Register
- Earnings Transactions History
- Benefit/Deductions Transactions History
- Employee Payment History
- Employment Information History
- Employee Advances History
- Employee Payment Accounting Transactions History